

PatternSmith Download, Installation and Unlocking

Computer Requirements

Windows 10 or newer

Intel Quad Core i5 processor or greater (i7 recommended)

8GB RAM (16GB recommended)

1 GB Hard Drive Space for Software (Solid State Hard Drive recommended)

Direct X 11.0 Graphics or better with a dedicated graphics card (integrated Intel graphics **not recommended**)

1680 x 1050 Screen Resolution or better recommended (1024 x 768 min)

Ethernet port for machine connection

Internet connection strongly recommended for better technical support.

Download

You can download the latest version of PatternSmith from our website:

www.autometrix.com

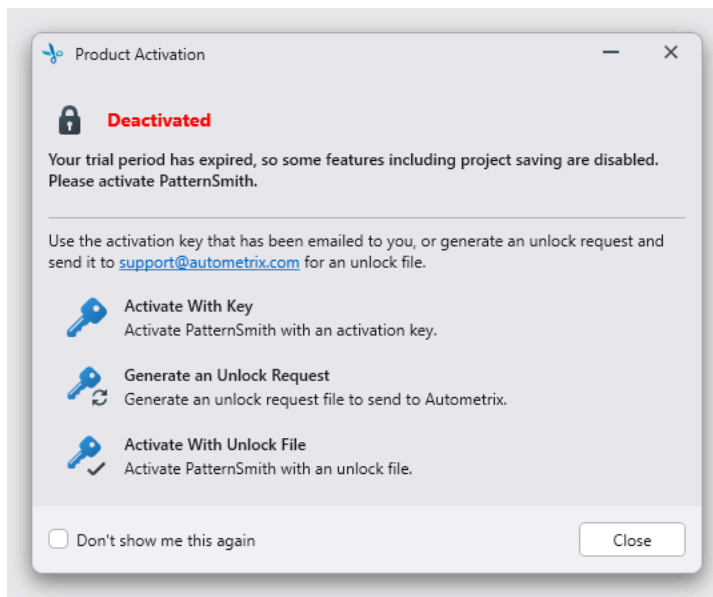
Go to Resources and Current Software...

Installation

When the download is complete simply run the file, follow the prompts and PatternSmith will install. If you do not have a previous installation of PatternSmith on your computer, the software will install in a 30-day trial mode. The software will be fully functioning for 30 days. After that, it will become “locked” and will only allow nesting and plotting. Editing patterns and saving files will be disabled.

Generating a PatternSmith Unlock Request

When PatternSmith is installed and run for the first time a Product Unlocking window will appear. If it does not, go to File - Help.



The easiest way to unlock PatternSmith is with an Activation Key. If you have not already received one, contact support@autometrix.com to get you Activation Key.

Alternately, click on Generate an Unlock Request. Save the file to the Desktop or other location of your choice and click Save.

Attach this file to an email to support@autometrix.com.

Applying a PatternSmith Unlock

If you used the Activation Key method, you are already done. Otherwise...

Copy this file to the desktop or a location of your choice.

Run PatternSmith if it is not already running.

In the Product Unlocking window, click on Apply an Unlock File and navigate to the unlock file. Click Open.

The unlock file will be applied and the Product Unlocking window will close.