

Autometrix SpeedLoader

Autometrix SpeedLoader is a small application that resides in the notification area. It monitors events generated by barcode readers that support the Zebra brand barcode reader protocol. SpeedLoader then uses the information contained in the barcode and a folder supplied by the user to look for PatternSmith projects and then loads these projects into PatternSmith ready for plotting and cutting.

SpeedLoader defines a project as any file using one of the following extensions: .project, .psxml, .pat or .dxf.

What is needed to use SpeedLoader?

- A Zebra compatible Barcode Scanner with configuration barcodes and instructions
- PatternSmith 7.6, PatternSmith 7.7 or PatternSmith 8.2.1 or later
 - If multiple versions of PatternSmith are found on a machine, SpeedLoader will use the version of PatternSmith with the highest version number.
 - If the "Prompt for a plot quota if the barcode does not contain a quota" option is used then PatternSmith 8.2.4 or later is required.
- SpeedLoader Installer
 - All need Zebra Device Drivers are contained in SpeedLoader's Installer.
 - SpeedLoader's system requirements are the same as the installed version of PatternSmith.
- Project files to be loaded by SpeedLoader
- Barcodes containing names of projects to load

How to Setup SpeedLoader

1. Create a folder that will contain the project files
 - a. This folder can be on a network or local to the PC with SpeedLoader.
 - b. See "How SpeedLoader searches for Projects" later in this document for how to set this folder up.
2. Install the version of PatternSmith you want SpeedLoader to use
 - a. You will need an unlock for both PatternSmith and SpeedLoader
 - b. Set PatternSmith up to talk to the Plotter / Cutter it will be controlling
 - c. Load and Plot / Cut the project you will be using and perform a test run
3. Run the SpeedLoader installer, restarting the machine if needed
 - a. Once SpeedLoader has been installed, it will automatically start when the computer it was installed on starts up.
 - i. If SpeedLoader icon does not appear in the notification area of the computer, multiple restarts may be needed. Windows sometime has trouble starting

SpeedLoader for the first time after an install. We have found that sometimes Windows needs as many as three restarts before the SpeedLoader icon will appear.

- b. The first time SpeedLoader runs, it will bring up its Configuration Dialog. From this dialog you can:
 - i. Generate a SpeedLoader Unlock Request
 - ii. Apply a SpeedLoader Unlock
 - iii. Set the Project Root Folder, where SpeedLoader looks for projectsThe SpeedLoader Configuration Dialog can also be brought up from the SpeedLoader menu.
- c. Verify that the Zebra Device Drivers were installed correctly
 - i. See the section "How to tell if the Zebra Device Drivers were installed correctly" later in this document on how to validate the Zebra Drivers installation.

4. Connect the Barcode scanner to the SpeedLoader PC

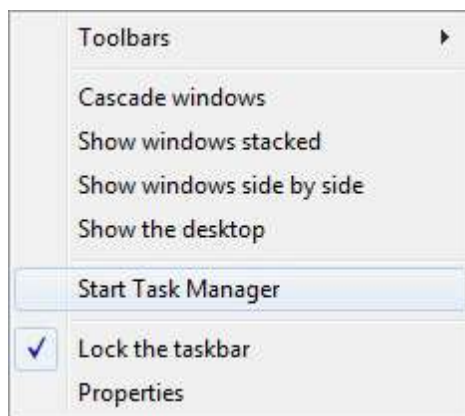
- a. This is particular to the type of Barcode scanner you are using. The simplest is a USB based scanner. It just needs to be plugged in. See your Barcode Scanner manual for how to connect your Scanner to the PC.
- b. Once connected to the PC, the Scanner Interface needs to be chosen. The Keyboard Interface will not generate any Scanner Events so SpeedLoader will not know something happened. Any of the other, non keyboard Interfaces such as IBM OPOS or IBM HAND-HELD USB, should work fine.

5. You are now ready to load projects via a Barcode Scanner

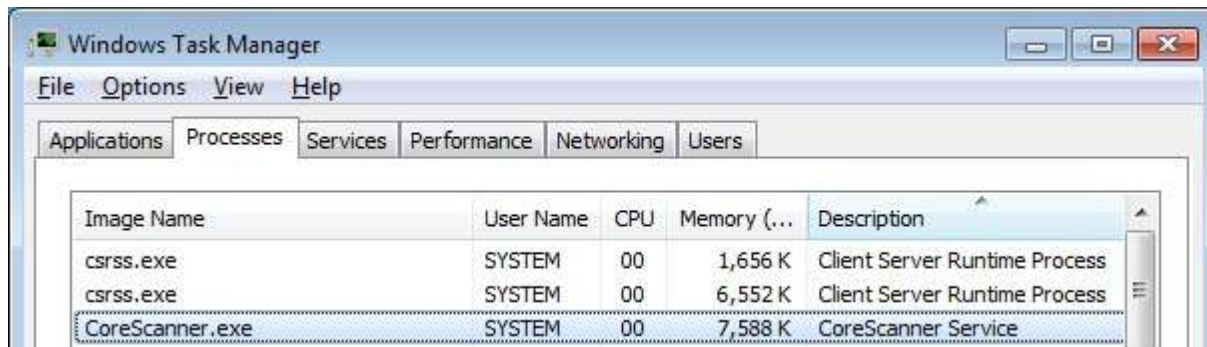
How to tell if the Zebra Device Drivers were installed correctly

The following instructions guide you through a simple check of the Scanner Drivers' Installation.

1. Right click on the *Windows Task Bar* and select *Task Manager*.



2. Under the *Processes* tab, find the *CoreScanner.exe* in the *Image Name* list under.



3. The appearance of "CoreScanner.exe" in the Processes list indicates a successful installation.

The Zebra Device Drivers were installed correctly but nothing happens

If SpeedLoader and the Zebra Device Drivers were installed correctly but nothing is happening, make sure the Barcode Reader is not in keyboard mode. No information is sent to SpeedLoader when the Barcode Scanner is in this mode. The Barcode Scanner is treated like a keyboard and will send characters but no Barcode Events. An easy way to see if the Barcode Reader is in keyboard mode is to open up Notepad and scan one of your barcodes. If the Barcode Scanner is in keyboard mode the barcode when scanned will appear in your Notepad document. If the Barcode Scanner is not in keyboard mode then nothing will appear in your Notepad document when the barcode is scanned.

Make sure that SpeedLoader and PatternSmith have been unlocked. To verify that PatternSmith 7 has been unlocked, start up PatternSmith go to the Help -> About dialog. To verify that PatternSmith 8 has been unlocked, start up PatternSmith and go to the File -> Help -> Activation dialog. To validate that SpeedLoader has been unlocked bring up the SpeedLoader Configuration Dialog. This dialog can be brought up via the SpeedLoader menu. Right click on the SpeedLoader icon in the notification area and one of the choices in the menu is Configure... This dialog can also be brought up by using the "SpeedLoader Config" link under the Windows Start Programs menu.

If the Zebra Device Drivers were installed correctly, and SpeedLoader and PatternSmith have been unlocked. Restart the computer at least three times. Windows does not always load SpeedLoader after a fresh install. By restarting three times the Zebra Device Drivers get verified by Windows followed by MFC and SpeedLoader.

If after restarting, SpeedLoader has still not shown up in the Notification Area on your screen, try starting SpeedLoader with the /Verbose command line option. Starting SpeedLoader in this fashion allows SpeedLoader to report more issues than it would at system startup. One way to enable the verbose mode is right click on your Windows desktop and choose New -> Shortcut. Browse... to SpeedLoader.exe, typically located in: "C:\Program Files (x86)\Autometrix\SpeedLoader

<Version>\SpeedLoader.exe". Once you have browsed to the location of the item, add " /Verbose" (with a space but without the quotes) to the end of the location string in the text box. Click Next and Finish to complete the creation of the shortcut. If healthy, the only notification SpeedLoader will issue is that everything is initialized and it is ready to receive barcodes.

To verify that SpeedLoader can launch PatternSmith, choose the "Launch PatternSmith" command from the SpeedLoader menu.

If both SpeedLoader and the Zebra Drivers have started correctly, and if the Barcode Scanner is not in keyboard mode, the issue is beyond the scope of this product and the manufacturer of your Barcode Scanner should be contacted. The Zebra website at <http://www.zebra.com> has several nice tools for verifying the connection and configuration of your Barcode reader.

What should the barcode contain?

At its simplest the barcode is the name of the PatternSmith project/dxf file without an extension.

For example, if the barcode is 1234 and you are using PatternSmith 8, then SpeedLoader looks for 1234.project, then 1234.psxml, then 1234.pat and then 1234.dxf and loads the first one it finds.

If the barcode is 1234 and you are using PatternSmith 7, then SpeedLoader looks for 1234.psxml, and then 1234.pat loads the first one it finds. PatternSmith 7 does not support plotting .project and .dxf files from the command line.

If the barcode contains a project, psxml, pat, or dxf extension then SpeedLoader will honor that and not try its own list.

Optionally, a plot quota may be specified, a plot quota is specified by appending a '#' followed by a number. For example, you want to cut project '5678' four times, the barcode should read '5678#4' or '5678.PSXML#4' (if you want to force a psxml extension). Plot quotas are supported by PatternSmith 8.2.1 and later.

If the plot quota '#' is not followed by a number, PatternSmith will prompt the operator for the cut quota. For example, if a barcode of '5678#' is specified, SpeedLoader will open up the 5678 project and prompt the operator what the plot quota should be. This feature can also be turned on by selecting "Prompt for a plot quota if the barcode does not contain a quota" in the configuration dialog. PatternSmith 8.2.4 or later is required for this feature.

How SpeedLoader searches for Projects

- SpeedLoader starts looking for projects in the Project Directory and then looks in all folders underneath this folder using the first project that it finds. In this way projects can be laid out in a tree and not have to be in just one folder, although that is perfectly acceptable as well.

- The only time that the Project Directory is not used is if the barcode starts with a drive letter or a backslash "\". This allows UNC filenames (the ones that start with \\ComputerName) and mapped drives to be specified in the barcode. One thing to keep in mind is that PatternSmith 7 does not support UNC filenames. If a drive or UNC is specified, only the path in the barcode is searched.
- If the Barcode contains "\" but does not start with a drive letter or "\", it is assumed that this is Barcode contains a path that is relative to the Project Directory. The Project Directory is combined with the barcode and only one directory is searched.
- If the barcode has a valid project extension embedded in its data, SpeedLoader will use that.
- If no extension is in the barcode, and PatternSmith 8 or later is used, the following file extensions are tried in the following order: .project, .psxml, .pat, and .dxf
- If no extension is in the barcode, and PatternSmith 7.x is used, the following file extensions are tried in the following order: .psxml and .pat
 - PatternSmith 7 is not capable of plotting .project and .dxf files from the command line.