

SCAPOS AutoNester Software - PatternSmith 8 & Newer

The Scapos AutoNester Software is designed to work inside of PatternSmith to allow the Automatic Nesting of Patterns. It requires a USB license key or dongle and the installation of the CodeMeter Runtime Kit.

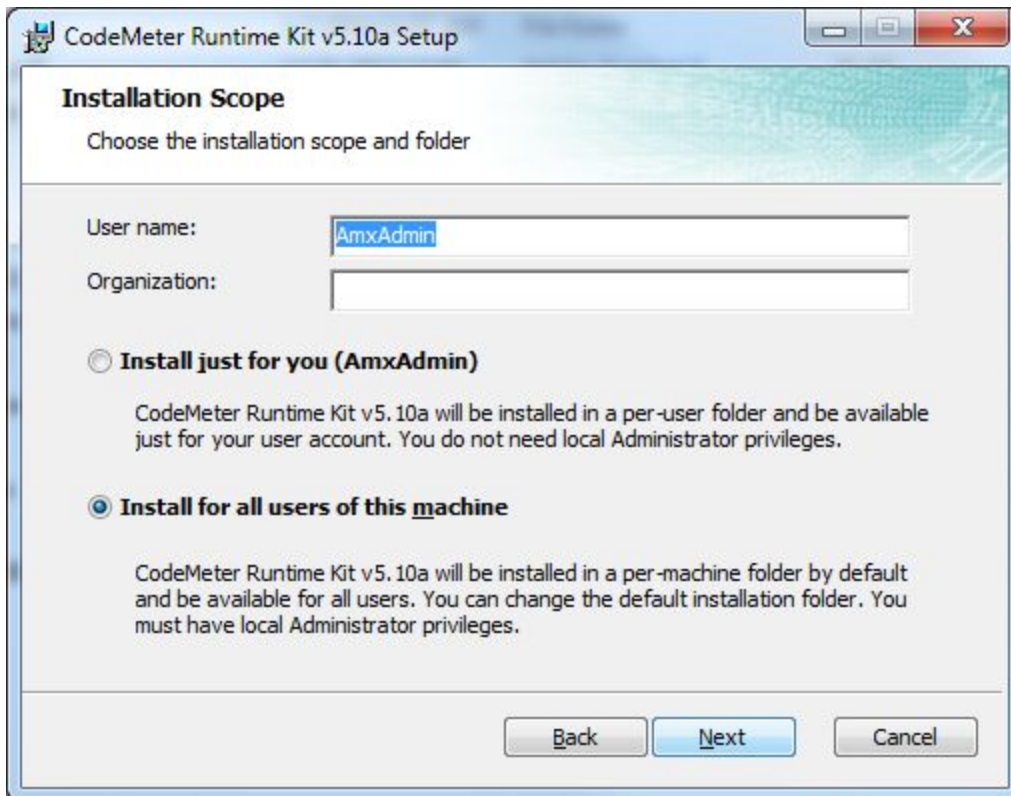
1. Installation

Make sure you have the appropriate PatternSmith 8 or later installed and unlocked.

Download and install the Codemeter Runtime Kit.

http://www.codemeter.de/downloads/files/cm5_10a/win/CodeMeterRuntime.exe

Run CodeMeterRuntime.exe and follow the prompts. Make sure to install for all users if there will be multiple users on this computer.



Complete the installation.

When the installation is finished you can insert the CodeMeter USB dongle into any available USB port.

The first time you plug in the dongle, Windows will automatically install the necessary drivers and display a message on the Task Bar. It will also display the Windows Explorer AutoPlay window. This window can be closed with no further action.

You may install this software on multiple computers with PatternSmith and move the dongle from computer to computer as necessary.

2. Operation

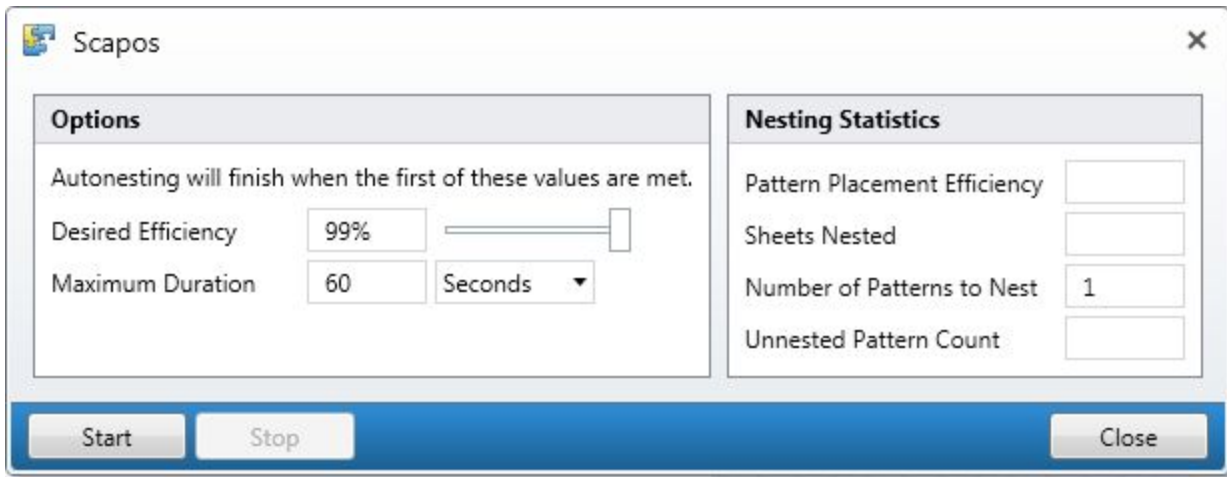
Run PatternSmith and open a file you would like to nest.

Set pattern rotation constraints and quotas if desired.

Select the patterns you wish to nest. You may select as many patterns as you wish. If a pattern's quota has already been met, it will be ignored.

Click on Scapos in the Autonest section of the Nesting Tab.

In the following window, you can set the amount of time in minutes that you would like AutoNester to use to nest. Minimum time is 20 seconds. A setting of 60 seconds will usually give you a very efficient nest.



Click Start. You will see the nesting progress on the screen.

You may click Cancel at any time if you are satisfied with the nest or wait for AutoNester to finish.

Your completed nest will show in the Nesting View. If there was not enough room on the current table, the software will automatically nest the excess patterns on the next table.

You may use AutoNester again to nest more patterns to the current table if space allows. You may also nest patterns by hand before or after Auto Nesting.